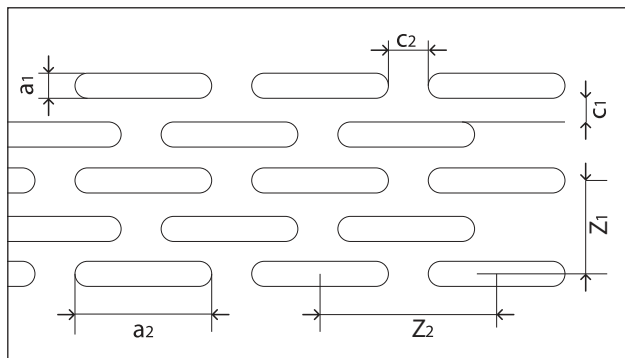


LAMIERE PERFORATE

PERFORATED SHEETS
TOLES PERFOREES

FORI OBLUNGHICI [LR] ALTERNATI [Z]



DETTAGLI TECNICI

DISPOSIZIONE A FORI ALTERNATI

$a1$ = larghezza foro

$a2$ = lunghezza foro

$c1$ = pieno tra i lati

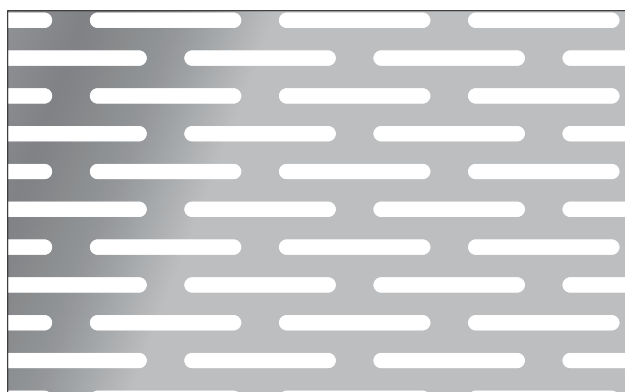
$c2$ = pieno tra le teste

$Z1$ = passo verticale

$Z2$ = passo orizzontale

% vuoto su pieno =

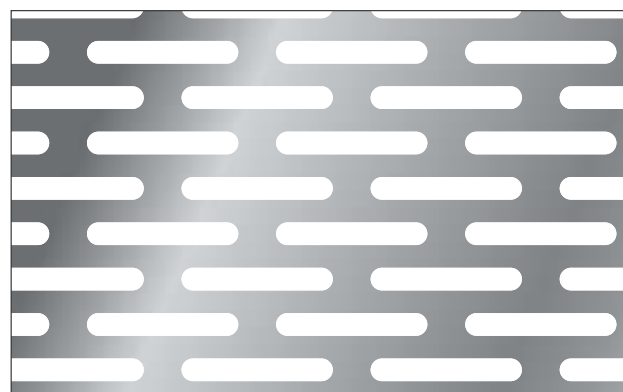
$$= \frac{a1 \times a2 - 0,2 a1}{Z1 \times Z2} \times 100$$



LR 2X20

Z 10X25

VP 31,7%



LR 3X20

Z 12X25

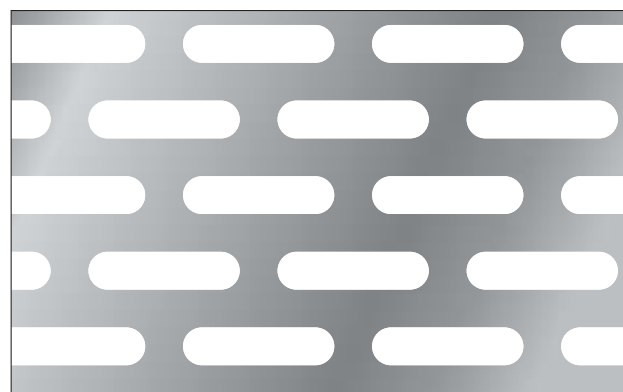
VP 39,6%



LR 4X20

Z 14X25

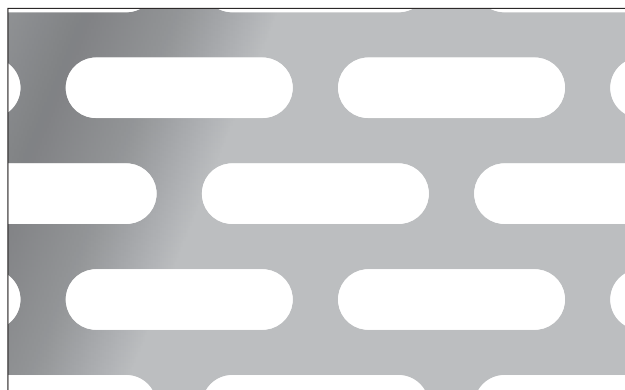
VP 45,3%



LR 5X20

Z 20X25

VP 39,6%



LR 8X30

Z 28x36

VP 47,3%



LR 10x30

Z 32x36

VP 51,7%

ELONGATED HOLES [LR] SIDE STAGGERED [Z] TROUS OBLONGS [LR] DISPOSITION EN QUINCONCE [Z]

TECHNICAL DETAILS

SIDE STAGGERED DISPOSITION

a1 = hole width

a2 = hole length

c1 = full between the edges

c2 = full between the heads

Z1 = vertical pitch

Z2 = horizontal pitch

% empty on full =

$$= \frac{a1 \times a2 - 0,2 a1}{Z1 \times Z2} 200$$

DETAILS TECHNIQUES

DISPOSITION EN QUINCONCE

a1 = largeur du trou

a2 = longueur du trou

c1 = plein entre les côtés

c2 = plein entre les têtes

Z1 = pas vertical

Z2 = pas horizontal

% vide sur plein =

$$= \frac{a1 \times a2 - 0,2 a1}{Z1 \times Z2} 200$$

Foro Holes Trous	Oblunghi alternati Elongated holes side staggered Trous oblongs disposition en quinconce	Passo verticale x orizzontale Z Vertical pitch horizontal pitch Z Pas vertical x horizontal Z	Percentuale vuoto % empty on full % vide sur plein
LR	1x20	7x25	22,60
LR	1,5x20	10x25	23,80
LR	2x20	10x25	31,68
LR	2,5x20	12x24	34,38
LR	3x20	12x25	39,60
LR	3,5x20	13x25	42,65
LR	4x20	14x25	45,26
LR	5x20	20x25	39,60
LR	6x20	24x25	39,60
LR	8x30	28x36	47,30
LR	10x30	32x36	51,74

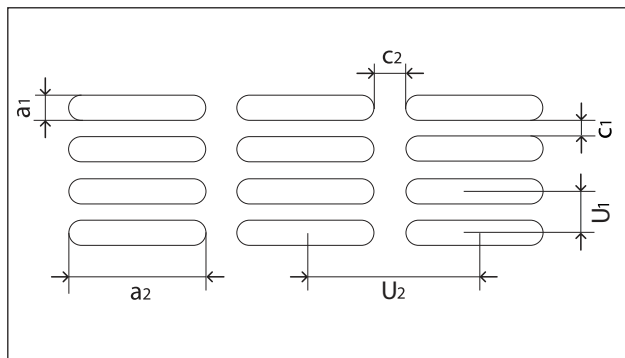
Misure espresse in mm - Dimensions in mm - Dimensions exprimées en mm



LAMIERE PERFORATE

PERFORATED SHEETS
TOLES PERFOREES

FORI OBLUNGHICI [LR] PARI [U]

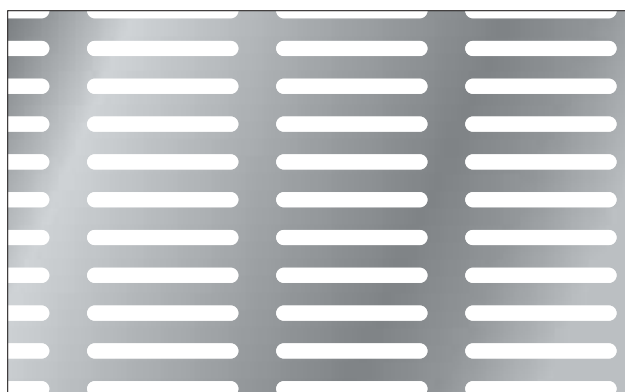


DETTAGLI TECNICI

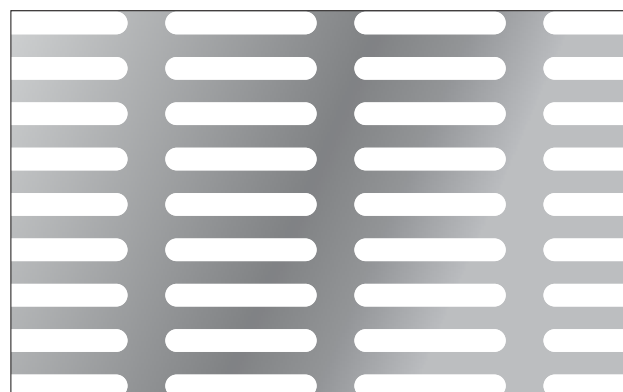
DISPOSIZIONE A FORI PARI

a1 = larghezza foro
a2 = lunghezza foro
c1 = pieno tra i lati
c2 = pieno tra le teste
U1 = passo verticale
U2 = passo orizzontale

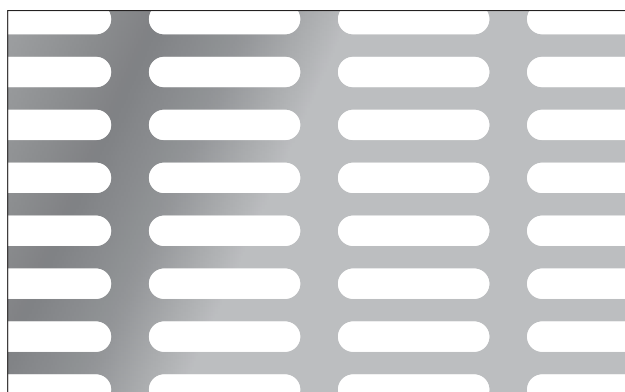
$$\% \text{ vuoto su pieno} = \frac{a1 \times a2 - 0,2 a1}{U1 \times U2} \times 200$$



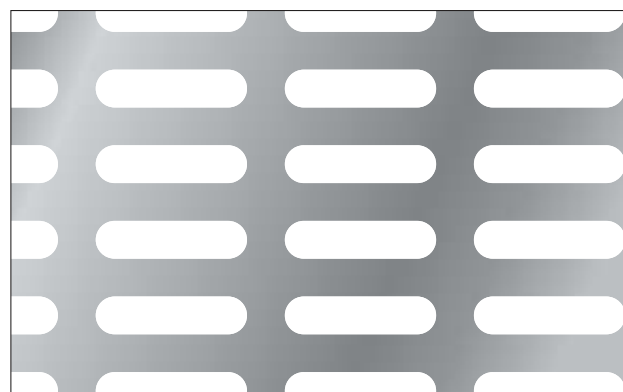
LR 2X20 U 5X25 VP 31,7%



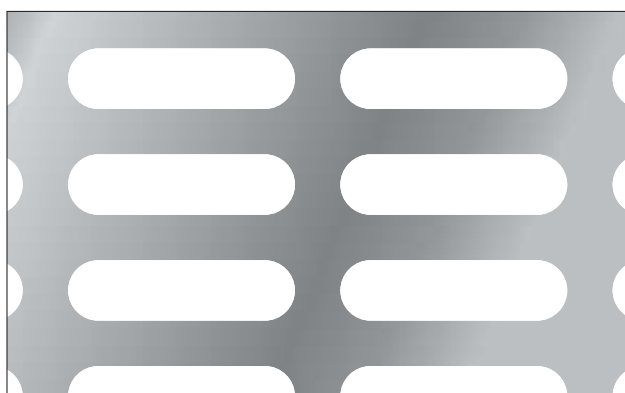
LR 3X20 U 6X25 VP 39,6%



LR 4X20 U 7X25 VP 45,3%



LR 5X20 U 10X25 VP 39,6%



LR 8X30 U 14x36 VP 47,3%



LR 10x30 U 16x36 VP 51,7%

ELONGATED HOLES [LR] EVEN DISPOSITION [U] TROUS OBLONGS [LR] DISPOSITION EN LIGNE [U]

TECHNICAL DETAILS

EVEN DISPOSITION

a1 = hole width

a2 = hole length

c1 = full between the edges

c2 = full between the heads

U1 = vertical pitch

U2 = horizontal pitch

% empty on full =

$$= \frac{a1 \times a2 - 0,2 a1}{U1 \times U2} 200$$

DETAILS TECHNIQUES

DISPOSITION EN LIGNE

a1 = largeur du trou

a2 = longueur du trou

c1 = plein entre les côtés

c2 = plein entre les têtes

U1 = pas vertical

U2 = pas horizontal

% vide sur plein =

$$= \frac{a1 \times a2 - 0,2 a1}{U1 \times U2} 200$$

Foro Hole Trous	Oblunghi pari Elongated holes even disposition Trous oblongs disposition en ligne	Passo verticale x orizzontale U Vertical pitch x horizontal pitch U Pas vertical x horizontal U	Percentuale vuoto % empty on full % vide sur plein
LR	1x20	4x25	19,80
LR	1,5x20	5x25	23,80
LR	2x20	5x25	31,68
LR	2,5x20	6x24	34,38
LR	3x20	6x25	39,60
LR	3,5x20	6,5x25	42,65
LR	4x20	7x25	45,26
LR	5x20	10x25	39,60
LR	6x20	12x24	41,25
LR	6x30	11x35	46,40
LR	8x30	14x36	47,30
LR	10x30	16x36	51,74

Misure espresse in mm - Dimensions in mm - Dimensions exprimées en mm

